



TURING FOUNDATION

ANNUAL REPORT 2015

TURINGFOUNDATION.ORG

HERENGRACHT 514, 1017CC AMSTERDAM, THE NETHERLANDS

TEL +31 (0)20 520 00 10

 Turing
Foundation
ANNUAL REPORT

CONTENT



NATURE 14

Nature Conservation Projects 16



EDUCATION 22

Education Projects 24



ART 34

Visual Arts Projects 36
The fourth Turing Art Award 42
Poetry Projects 46
Music Projects 48



LEPROSY 52

Leprosy Projects 54

FOREWORD	4
WHO WE ARE	8
PROCEDURE	9
OUR FUNDING AREAS	10
THE TURING FOUNDATION IN NUMBERS	12

FINANCIAL REPORT	60
Capital of The Turing Foundation	60
Financial Developments in 2015	60
Asset Management	61
Audit	61
Financial Statements	62
BOARD OF TRUSTEES AND ORGANISATION	64
INDEX	65
COLOFON	66

FOREWORD





Victims of the Ebola outbreak of 2014-2016
(Source: World Health Organization, March 16, 2016)

Alas! No project trip this year - such a rewarding subject for a foreword! We had to cancel our visit to Sierra Leone after West Africa was hit by the worst Ebola outbreak in history, an outbreak that would eventually result in 50 times more fatalities than the hitherto largest outbreak in Uganda in 2001.

As will be seen further on in this annual report, the crisis has negatively impacted many initiatives our foundation was trying to undertake in Liberia, Sierra Leone and Guinea. Now that the crisis is officially under control, we can see that it didn't destroy, but only postponed those projects.

In our own country, the museums did particularly well this year, both in terms of public interest and in quality. Submitted exhibition plans are becoming noticeably more ambitious, more interesting and more attractive to the public, and as a result more and more successful. The majority of exhibitions we supported in 2015 enjoyed unprecedented success. In the Leiden Museum of Ethnology, 'Geisha' became their best-attended exhibition ever. With 220,000 visitors, the double exhibition about William Turner (at Museum de Fundatie and

Rijksmuseum Twenthe) far surpassed their ambitious target of 100,000 visitors. With 360,000 visitors, 'Matisse's Oasis' was the most-visited exhibition at the Stedelijk Museum Amsterdam since its reopening, while the Munch / Van Gogh exhibition at the Van Gogh Museum became the most-visited exhibition in the Netherlands in 2015 with 585,620 visitors.

We also organised the fourth Turing Art Award this year, our incentive award for the best (most unique, most interesting, most surprising) exhibition plan, intended to further whip up the ambitions of museums. This time, on top of the € 500,000 grant (which offers spectacular opportunities for even the largest museums), we introduced a second grant of € 150,000, which only smaller museums are allowed to compete for.

The jury (our board) awarded this new €150,000 prize to the Stedelijk Museum Alkmaar's ambitious plan to have an exhibition – with at least 30 foreign loans – about Caesar van Everdingen, on the occasion of the 400th anniversary of this intriguing painter from Alkmaar.

The prize of half-a-million euros went to the Fries Museum, for their exhibition about Sir Lawrence Alma-Tadema, the Frisian painter who became so hugely successful in Victorian England. His dreamy, sometimes hysterical paintings have had an indelible impact on what people today think ancient life used to look like. His work was reviled after World War I, reaching a low point in the sixties, when his work remained unsold at asking prices of a few hundred guilders. Things have changed since then. One of his paintings recently set a new auction record for Victorian paintings at \$ 35 million. I'm sure we'll talk more about these exhibitions in coming years.

The Turing Museum Buses that transport children to and from museums free of charge, which we have financed for six years, have now been transferred into good hands. As of 2016, the Museum Square Bus will be paid for by the museums around the Museum Square Amsterdam themselves. The Museum Bus that we have supported in Rotterdam since 2008 is now funded by the Boijmans Friends and a private benefactor.



Like all the previous editions, our seventh Turing Poetry Competition drew about 10,000 entries. This year's edition saw the youngest winner ever, the 20-year-old Else Kemps, who, thanks to her first prize, now presents a poem every Thursday morning on Giel Beelen's Radio 3FM.

Our Director of Nature Conservation and Education, Minke van Rees, has managed to shift and clarify our focus on biodiversity both in the seas and on land. As a result, we will support fewer sustainable agriculture projects (where the emphasis is often on income generation for poor farmers, and no matter how noble that goal is, it is not what our budget is intended for).

In the field of Education, Minke and Chantal Vrugink have also managed to sharpen our focus, specialising in each country on its most important deficiency: primary schools, secondary schools, or vocational training. Teacher training is becoming more and more important in all countries.

Regarding the fight against leprosy: assessing and monitoring our research projects is becoming more difficult every year. We support projects in areas such as molecular viability assays, micro-epidemiology, gene expression profiles, and comparative biomarker transcriptomics. We warmly thank the Leprosy Relief Initiative and its independent Scientific Review Committee for their help, not just in criticising and evaluating these applications, but also in helping to understand and summarise their results.

None of the Turing Foundation's good work would be possible without our amazing staff: Ellen Wilbrink (Director of Art and Leprosy), Minke van Rees (Director of Nature Conservation and Education), Florentine van Waesberghe-Six (monitoring and evaluation of art projects), and Chantal Vrugink (monitoring and evaluation of education projects). And as always, we owe a debt of gratitude to our fellow board members Alexander Ribbink and Jeroen Davidson. With intellect and humour they have assisted our Foundation since its inception in 2006 with the hundreds of decisions and judgments needed every year for all the project applications we receive.

Thanks to this team, we can look forward to our tenth anniversary with pleasure and confidence.

Pieter and Françoise Geelen



WHO WE ARE

The Turing Foundation was founded in 2006 by Pieter and Françoise Geelen and financed from the proceeds of TomTom's IPO. They chose four funding areas when they founded it: **NATURE CONSERVATION**, **EDUCATION**, **ART** and **LEPROSY**. The Turing Foundation aims to make a contribution to a better world and a better society, now and in the future. We strive to make a significant difference and aspire to achieve sustainable results in all we do. Our main activity is allocating funds to projects which contribute towards this objective. We do not initiate or execute projects ourselves, but work towards their realisation via (predominantly Dutch) partner organisations. Our grant-making policy focuses exclusively on projects within our four defined funding areas. Each of the four areas has its own objectives, grant policies, budget and geographical focus.

PROCEDURE

Every organisation that makes a successful application is sent an official grant letter, setting forth the conditions, interim evaluation criteria and requirements for the final report. This letter, together with the project plan, is used as the basis for monitoring and evaluation.

When an application is approved, the Turing Foundation usually directly provides 90% of the sum granted. The remaining 10% is paid after the final report and the financial report have been approved.

For our art contributions, we closely monitor the entire process from grant approval to realisation, and we visit all projects. Projects in developing countries are monitored through our (predominantly Dutch) partner organisations, and at least once a year we try to make a project visit to our local partners. In October 2015 a delegation from the Turing Foundation attended the presentation of a mangrove programme by Wetlands International in Guinea-Bissau.

OUR FUNDING AREAS



The Turing Foundation's goal is to achieve a well-balanced ecosystem by protecting biodiversity and stimulating the sustainable use of natural resources. We specifically focus on initiatives which enable sustainable land use in ten African countries and initiatives which aim to protect and sustain the health of the nurseries of the sea.



The Turing Foundation's goal is to offer high-quality education to children and young people in developing countries, which structurally assists them, makes them more independent and autonomous, and increases their ability to contribute to their communities. We want more children to learn better. The Turing Foundation is focused on improving the access to high-quality primary education, and on vocational education and training in ten African countries.



The Turing Foundation wants more people in the Netherlands to enjoy art. Which is why the Turing Foundation supports top-quality projects which attract a large public in the fields of visual arts, classical music and Dutch poetry.



Early diagnosis and (preventive) treatment of leprosy is crucial: it is the only way to reduce its spread and prevent permanent nerve damage. For this reason, the Turing Foundation contributes towards scientific research into the origin and spread of the disease.

THE TURING FOUNDATION IN NUMBERS

Since it was founded in July 2006, the Turing Foundation has made or allocated donations to (multiannual) projects totalling € 31.2 million.

In 2015 we donated a total of € 2,681,967 to charities; we received 323 applications, and approved 40 applications.

By the end of 2015 we had given support to 73 projects.

NATURE CONSERVATION

Protecting the nurseries of the sea worldwide and encouraging sustainable land use in ten African countries.

Total: € 8,089,406; of which € 564,500 in 2015

EDUCATION

Improving access to high-quality education and vocational training in ten African countries.

Total: € 9,137,487; of which € 541,358 in 2015



ART

Getting more people to enjoy art in the Netherlands: the visual arts, classical music and poetry.

Total: € 8,989,805; of which € 1,092,582 in 2015

LEPROSY

Supporting scientific research into early diagnosis and treatment of leprosy.

Total: € 4,672,566; of which € 483,527 in 2015

NATURE CONSERVATION

The Turing Foundation's goal is to achieve a well-balanced ecosystem by protecting biodiversity and stimulating the sustainable use of natural resources. We specifically focus on initiatives which enable sustainable land use in ten African countries and initiatives which aim to protect and sustain the health of the nurseries of the sea.

PROJECTS IN: *BURKINA FASO – D.R. CONGO – PHILIPPINES*

GUINEA-BISSAU - INDONESIA - MOZAMBIQUE – THE NETHERLANDS – NIGER



SUSTAINABLE LAND USE

The Turing Foundation supports conservation organisations that protect 'biodiversity hotspots' or regenerate arid areas.

HEALTHY NURSERIES OF THE SEA

We support nature conservation organisations that protect and restore important nurseries, such as mangroves and coral reefs.

NATURE CONSERVATION PROJECTS



BURKINA FASO

‘Turing’s contribution is very important for Tiipaalga because it helps to support the implementation of global action which takes in all facets of sustainable development. This support enables the restoration, protection and sustainable use of natural resources which is the basis of rural populations’ lives and their livelihoods in Burkina Faso.’

Alain Traore, Coordinator, Tiipaalga

SUSTAINABLE MANAGEMENT AND RESTORATION OF THE ECOSYSTEM IN THE SAHEL

Tiipaalga was founded in 2006 by the Swiss organisation newTree and is its local partner in Burkina Faso. The organisation wants to green the Sahel by increasing soil fertility, countering erosion and reintroducing indigenous trees. This requires interventions which are implemented in cooperation with village communities. Three-hectare plots are fenced off to give the local environment a chance to regenerate. Villagers are also trained in sustainable agricultural methods and environmentally-friendly income generating activities, like producing honey and fodder. Women are also taught how to make, use and maintain wood-saving ovens. The Turing Foundation gave the organisation € 28,000 in 2014, and thanks to the good results our support will be continued until 2018. 20 plots – covering 58 hectares – were fenced off in 2015, bringing the total to 775 hectares in 112 villages. In 2015 contour stone bunds were built on 97 hectares of land to counter erosion, and 359 hectares were cultivated using the Zai technique. More than 5,000 hectares of land are now being sustainably managed.

Turing Foundation’s donation	€ 150,000 (€ 25,000 in 2015)
Period covered by donation	2015 – 2018



‘This project can turn the hope of local development via sustainable forestry management into a reality. The financial support of Turing Foundation is vital for Greenpeace to help forest communities take up the responsibility for improving the rational use of their own resources and improve their livelihoods.’

Raoul Mondembula, Greenpeace Country Coordinator D.R. Congo

IDENTIFYING SUSTAINABLE ALTERNATIVES FOR LAND USE

Greenpeace is an international campaigning organisation dedicated to protecting nature through research, consultation and – if all else fails – action. It wants to stop the deforestation of the Congo basin and is working with local organisations to achieve adequate legislation and ditto monitoring. Greenpeace promotes appealing, replicable and scalable alternatives that show governments and international donors it is possible to have economic development without having to cut down virgin forests. Greenpeace has identified what it calls ‘community forestry’ as a concrete and better alternative. This involves granting concessions (leasing the land) to the local communities, which will help them to safeguard their livelihoods and the forest. In 2015 Greenpeace provided the government, on behalf of local communities, with input on a legal framework to properly implement these concessions. The decree was signed at the start of 2016. Greenpeace is now helping two communities to apply for a community forestry concession. This is expected to ease the way for other communities.

Turing Foundation’s donation € 30,000
Period covered by donation 2015

NATURE CONSERVATION PROJECTS

PHILIPPINES MANGROVE REHABILITATION, VERDE ISLAND PASSAGE

For more than 25 years Conservation International has been doing valuable work protecting nature, and involving politicians, policy makers, business and society in these efforts. Conservation International works with the local Filipino population to restore 165 hectares of mangrove swamps on the islands of Mindoro and Marinduque by replanting them. Local communities and the government are being given courses to learn about nature conservation, which will result in the better management and monitoring of at least another 1,000 hectares of mangrove and coastal areas. This capacity building and the creation of favourable political conditions are laying the groundwork for the sustainable management of mangroves in the area. The project only commenced in June 2015 because of a delay in securing the co-financing. The area has now been mapped, 165 hectares have been selected for restoration, and the local communities have been consulted.



Turing Foundation's donation € 320,000 (€ 115,000 in 2015)
Period covered by donation 2014-2016

PHILIPPINES EFFECTIVE RESTORATION OF MANGROVES

As well as having two major zoos, the Zoological Society of London (ZSL) has a renowned science and nature protection department. There has been increased interest in mangroves and coastal protection in the Philippines since typhoon Haiyan in November 2013. For this reason, ZSL wants to accelerate the transfer of knowledge about proven effective methods to restore and protect mangroves by organising a training programme for 100 trainers and a national conference on the subject. This will improve the success rate of newly planted mangroves. The Filipino mangrove team trained 506 people and trained 71 trainers in the period 2014 – 2015. The conference was a success: it had 143 participants and ended with a powerful call for action. There is clearly a growing consciousness of the importance of mangroves in the Philippines.



Turing Foundation's donation € 70,000
Period covered by donation 2014-2015



GUINEA-BISSAU CONSERVING THE BIODIVERSITY OF THE CACHEU MANGROVES NATURAL PARK

Wetlands International is the only organisation dedicated to worldwide conservation and restoration of wetlands, their resources and biodiversity. Their work in West Africa is focused on the protection of mangrove areas. Wetlands wants to protect the mangrove nature park Cacheu in Guinea-Bissau by improving the park's management, restoring this important buffer zone and encouraging its sustainable use. In addition to strengthening the park's management capacity, Wetland is working with seven local communities to restore 200 hectares of mangrove forest, and is teaching them better rice production techniques to prevent more mangrove forest being felled. Local communities directly help the park management with conservation by restoring degraded areas and adopting sustainable alternatives, like improved rice cultivation techniques. The area was mapped in October 2015 and restoration areas have been identified. Action plans are being drawn up in consultation with local communities.

Turing Foundation's donation € 350,000 (€ 145,000 in 2015)
Period covered by donation 2015-2018



INDONESIA ASMAT COASTAL WETLAND IN PAPUA

WWF-Netherlands is part of the World Wide Fund for Nature (WWF), the world's largest and most well-known nature conservation organisation, operating in over 100 countries from offices in 60 countries, including Indonesia. This project aims to protect and encourage the sustainable use of mangrove forests along the south western coast of Asmat and Mimika districts in Papua. The government and local people lack the knowledge to prevent the large-scale disappearance of mangrove forests in the future. For this reason, WWF Indonesia is mapping the area to indicate the sensitive and degraded areas, which will serve as the basis for management plans and is teaching the local population to monitor developments using geotagging. Seven community groups are being trained to restore and sustainably use an 80-hectare area of mangroves. In addition, the WWF makes sure that environmental education is incorporated into the curriculum so that children learn about the value of mangrove areas.

Turing Foundation's donation € 162,500 (€ 37,500 in 2015)
Period covered by donation 2015-2018



NATURE CONSERVATION PROJECTS

MOZAMBIQUE DEVELOPMENT OF PONTA DO OURO PARTIAL MARINE RESERVE

The Peace Parks Foundation protects the nature in the border regions of Southern Africa. There are currently ten Peace Parks, including the Ponta do Ouro Partial Marine Reserve, which was set up between 2009 and 2013 with the assistance of the Turing Foundation. Management is in the hands of a solid team, and the community is very involved. However, the park does not yet generate enough income, for example from tourism or other foundations, so it still needs supplementary financial support to consolidate the protection work.

In 2014 and 2015 the Turing Foundation contributed towards equipment needed for law enforcement and various operational costs. The vehicles that were purchased have had a clear, positive and permanent effect on protection work. Fuel and maintenance costs have been lowered, rangers can act more quickly when there is wrongdoing, and they can patrol a greater area.



Turing Foundation's donation **€ 110,000 (€ 59,000 in 2015)**
Period covered by donation **2014-2015**

NIGER REGREENING THE SAHEL, DOGONKIRIA AND SOUCOUCOUTANE

BothEnds and CRESA have been working together since 2010 to encourage farmers to grow trees and plants on their land. 'Farmer Managed Natural Regreening' is a cost-effective method, and the initiative has resulted in the regeneration of 621,000 hectares of land. The Turing Foundation already supported this project in 2013-2014. Work in Dogonkiria and Soucoucoutane will be intensified over the next two years, resulting in the re-greening of an additional 500 hectares. In addition, the local capacity is being expanded so that after 2016 the local support can be increased independently, management training can be provided, and developments can be monitored and assessed. There was an evaluation of the previous phase at the start of 2015, and an action plan for the next phase was formulated with thirty participants. In mid-2015 a total of 42 trainers from 21 villagers were trained; they in turn each trained 20 farmers. In total 840 farmers and nomads were trained.



Turing Foundation's donation **€ 80,000**
Period covered by donation **2015**



THE NETHERLANDS

‘The Turing Foundation’s assistance has enabled the WWF to take up the challenge of reintroducing the most spectacular fish species to our waters. This is an important step in the process of making the North Sea a rich sea once more.’

Allard Stapel, head of external relations, WWF-Netherlands

REINTRODUCING THE BLUEFIN TUNA TO THE NORTH SEA

The North Sea is the largest natural area in the Netherlands, which the WWF-Netherlands wants to protect by developing sustainable fisheries and creating a network of protected marine areas. The reintroduction of the Bluefin tuna to the North Sea is a supplementary project. This will give a huge boost to the protection work and at the same time will be evidence of a healthier ecosystem. The WWF is paving the way by building social and political support, developing a tuna translocation programme and protecting important nursery areas in the Mediterranean.

The results from 2015 have led to the decision to go ahead with this project in 2016-2017. There are no legal obstructions to reintroducing the fish, it is more cost-effective to do this from Norway than from the Mediterranean, and there is sufficient support from society at large. The WWF will continue to develop a reintroduction programme off the Norwegian coast and a digital hotline for special marine species.

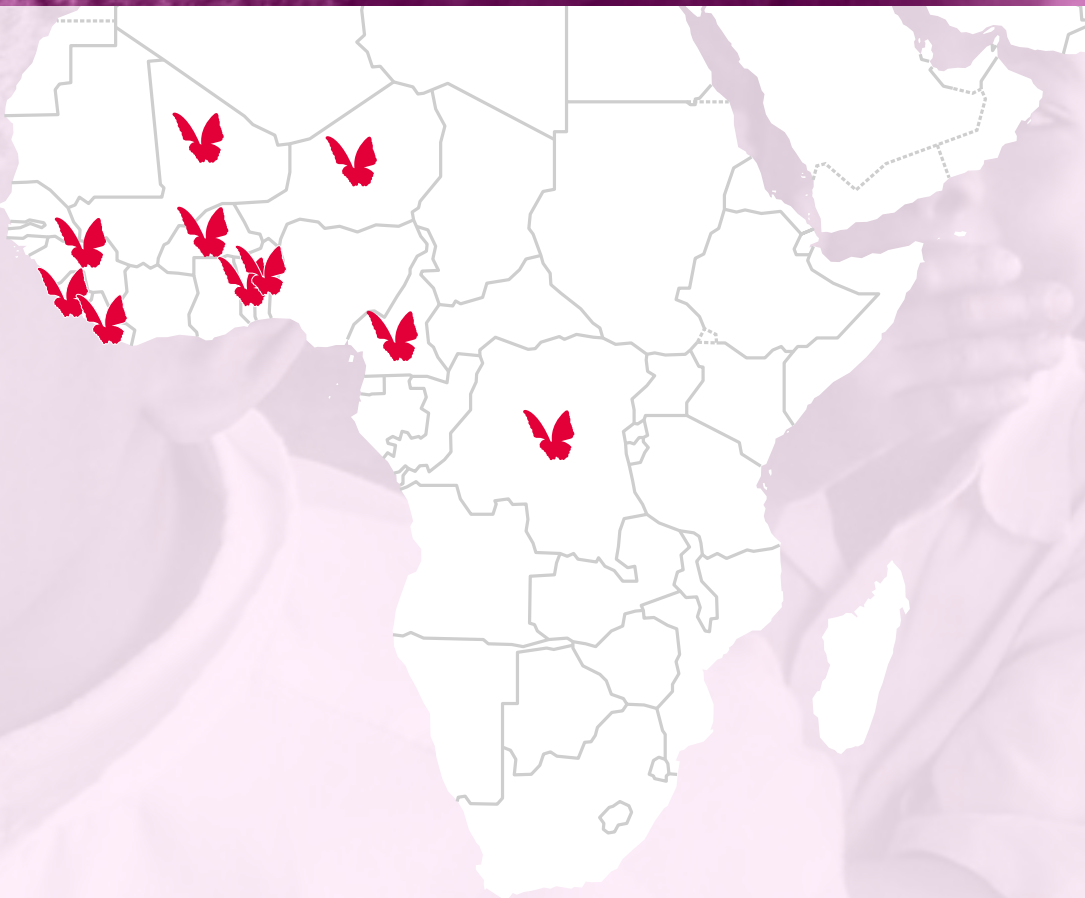
Turing Foundation’s donation	€ 470,000 (€ 170,000 in 2015)
Period covered by donation	2015-2017



EDUCATION

The Turing Foundation's goal is to offer high-quality education to children and young people in developing countries, which structurally assists them, makes them more independent and autonomous, and increases their ability to contribute to their communities. The Turing Foundation is focused on improving access to high-quality primary education, and on vocational education in ten African countries.

**PROJECTS IN: BENIN – BURKINA FASO – D.R. CONGO – GUINEA – CAMEROON
– LIBERIA – MALI – NIGER – SIERRA LEONE – TOGO**



HIGH-QUALITY PRIMARY EDUCATION

We support initiatives in Burkina Faso, D.R. Congo, Guinea, Mali and Niger that ensure more children are able to learn better. For example, by training teachers, providing better teaching materials and more effective preconditions.

VOCATIONAL EDUCATION

The Turing Foundation supports educational organisations in Benin, Cameroon, Liberia, Sierra Leone and Togo that give young people formal and informal vocational education and assists them in finding employment.

EDUCATION PROJECTS

BENIN TWO TEACHER TRAINING SCHOOLS IN PARAKOU

The Belgian Hubi & Vinciane Foundation supports regional development in the city of Parakou (central Benin) and its environs through projects in the field of healthcare, economic (agricultural) development and education. One of their projects is the teacher training schools. In part thanks to a grant from the Turing Foundation in 2013, the quality of education for 550 students was improved in 2013. Building an extra classroom has enabled the number of students to be increased in 2015 compared to previous years. The schools' financial results are positive and are expected to increase further, which will increase their financial reserves and decrease the schools' dependence on donors. In addition, more qualified teachers are being employed by the schools, further improving the students' education. A total of 500 books have been bought for both schools' libraries, improving the availability of relevant information for both students and teachers.



Turing Foundation's donation € 19,000

Period covered by donation 2015

BENIN CONSTRUCTION OF A PRIMARY SCHOOL IN FANTA

Le Pont Foundation works in Benin on projects concerning education, healthcare, water and sanitation. Every year Le Pont builds a school with the help of the local community, which is responsible for part of the finance and labour needed for construction and maintenance. This particular project involves a school in Fanta, a small village in Com  province, in the south of Benin. Half of the 200 school children are taught in an open construction made of posts and straw. The construction of three classrooms made of stone will directly contribute to better education for this group of children.

On 20 November 2015 – a year later than planned – the new school building was opened. It was a festive event, attended by the Dutch ambassador to Benin, representatives of the Ministry of Education and those involved from the local community in Fanta.



Turing Foundation's donation € 12,000

Period covered by donation 2014 - 2015

BURKINA FASO TECHNICAL VOCATIONAL TRAINING IN LEO AND BOBO-DIOULASSO

Woord en Daad has been working in Burkina Faso with the local development organisation CREDO for many years. The Turing Foundation has previously supported their projects, with good results. CREDO improves the educational and employment opportunities for young Burkinabè by providing vocational training and employment guidance.

A total of 719 young people at two vocational colleges are enrolled in three-year courses in electrical installation, steel construction, masonry, metalworking or hairdressing. In addition, young people who are already working are given a three-month technical or agricultural training course each year to improve their skills. Job placement organisation SPEDE subsequently helps these young people find a job and/or trains them to be entrepreneurs. In 2015 more pupils than planned received vocational training. This was partly thanks to a new training course in tiling, which was set up in cooperation with FAFPA, a Burkina government body.

Turing Foundation's donation € 120,000 (€ 40,000 in 2015)

Period covered by donation 2014 - 2016



D.R. CONGO 'ACTIVE LEARNING AND TEACHING' IN KINSHASA

Edukans is a Dutch development organisation dedicated to education. The organisation has developed a special training programme to train teachers in active learning methodology, which improves school results. In this project Edukans is working with the Salvation Army and education NGOs in D.R. Congo to introduce this teaching methodology to three teacher training colleges and twelve schools. A total of twelve teacher trainers and 48 primary school teachers are being trained to disseminate this methodology more widely and reach at least 4,000 students. The goal is for the teacher training colleges and NGOs to be able to independently carry out the training programme after three years. The government has been involved from the start, in order to get the methodology implemented at the national level.

Turing Foundation's donation € 150,000 (€ 25,000 in 2015)

Period covered by donation 2015-2018



EDUCATION PROJECTS



‘With support from the Turing Foundation we focused more on short retraining courses instead of long-term parallel training for a more limited group. This improved and accelerated access to regular education for a larger group of children.’

Esther Obdam, Programme Development Manager War Child in D.R. Congo

IMPROVEMENT OF EDUCATIONAL QUALITY AT EIGHT SCHOOLS IN KALEHE, KABARE AND WULUNGU

War Child is devoted to giving children who have been affected by war a peaceful future. This project is focused on displaced children who have missed school because of conflicts. The children only follow catch-up classes for the months they have missed, so they do not have to repeat a whole academic year. The Turing Foundation's contribution is earmarked for the creation of four safe places for the children to learn, the children's participation in catch-up classes and literacy lessons, combined with teacher training.

In the 2014-2015 academic year 1,282 children participated in catch-up classes. This is fewer children than anticipated, and was partly caused by the worsening safety situation in the project area. However, more children learnt to read, write and count, thanks to the literacy lessons. This new accelerated-learning approach in South Kivu seems to be catching on. It has been well received by educational organisations and the community and will be expanded in the region.

Turing Foundation's donation € 105,000 (€ 10,000 in 2015)
Period covered by donation 2012 - 2015

D.R. CONGO ACCELERATED PRIMARY EDUCATION FOR TEENAGERS IN FIZI DISTRICT, SOUTH KIVU

ZOA provides support in those areas that have experienced a natural disaster or armed conflict, like Fizi district in the east of D.R. Congo. ZOA provides children between the ages of 10 and 16 a three-year primary school curriculum. This project gives young people who have missed out on education the opportunity to continue their education, thanks to an accelerated primary education programme. It is a continuation of the successful 2010-2013 education programme, which was also supported by the Turing Foundation, and enabled 3,500 children to pass their primary school leaving exam. The positive effects can be seen in large parts of the district, but consultation with the local education institutions has shown that this kind of education project is still greatly needed in the district. A total of 960 pupils attended an accelerated primary programme in the academic year 2014-2015, including 510 girls.



Turing Foundation's donation € 140,000 (€ 45,000 in 2015) Period covered by donation 2014 - 2017

GUINEA GIRL-FRIENDLY SCHOOLS IN BOKÉ AND KINDIA

The French education organisation Aide et Action is an important international player that aims to improve access to and the quality of education in Guinea. In this project it is improving education for 5,000 students at twenty schools in four rural communities in Boké and Kindia. It is teaching 120 teachers a better teaching methodology, as well as a more positive attitude towards girls. Local involvement in the education system is being increased by formulating, selecting and implementing school projects together with the local communities. In addition, these school projects directly contribute towards better education by, for example, removing obstacles for girls.

The commencement of this project was postponed until March 2015 due to the ebola epidemic. Aide et Action subsequently inventoried teachers' specific training needs, the preparation and content of training plans and the establishment of school projects.



Turing Foundation's donation € 150,000 (€ 50,000 in 2015) Period covered by donation 2014 - 2017

CAMEROON REVOLVING LIBRARY AND TEACHER TRAINING IN BAMELI

The AgriDynamic Foundation is committed to improving school results by training teachers and providing better teaching materials. After the successful results of a project supported by the Turing Foundation in Bamessing, AgriDynamic is expanding the project to the village Bamei. Setting up a library with all necessary books and training teachers will enable the 1,270 children at four primary schools to learn better. Teacher training (including active teaching methodology) and the availability of teaching materials will improve pupils' school results and reduce the number of children having to repeat a year. The contribution of the Turing Foundation's is earmarked for capacity building and teacher training.



Turing Foundation's donation € 17,000 (€ 10,000 in 2015) Period covered by donation 2015 - 2016

EDUCATION PROJECTS

CAMEROON SCHOOLBOOK PROJECT FOR PRIMARY SCHOOLS

Knowledge for Children helps rural schools in Cameroon's North West Region to improve the level of education for children between the ages of 6 and 14. It helps create a good stock of books, and trains teachers. A book fund is also being set up, so schools can eventually independently manage and supplement their own text books. Research by Knowledge for Children has shown that the reading ability of children at the selected schools is lower than expected. As a result, the school book programme was reduced to 140 schools in 2015 - instead of the 200 envisioned - enabling more attention to go towards improving the children's reading ability and on-the-job training for teachers and teaching assistants.

Turing Foundation's donation € 90,000 (€ 20,000 in 2015)
Period covered by donation 2013 - 2015



KENYA EDUCATION AND FOOD PROGRAMME FOR 10,000 SCHOOL CHILDREN IN THIKA

The Macheo Children's Centre runs a children's home in Thika, and supports several primary schools in the nearby slums. The programme provides all pupils with a simple, free meal, and donates a school uniform to the very poorest children. The nutritious daily meal has led to a substantial increase in the number of students at the schools involved, as well as to a significant improvement in school results. Macheo wants to increase the number of meals to a total of 10,000 daily school meals. The Turing Foundation is supporting the programme for three years. Macheo's contribution will increase every year, until the organisation is able to finance the programme entirely on its own. The revenue from various income-generating activities is steadily increasing, but is not yet sufficient to cover the entire budget.

Turing Foundation's donation € 87,600 (at most € 15,000 in 2015)
Period covered by donation 2013 - 2015





“This project came to temporary halt in July 2014 due to the outbreak of ebola. The Turing Foundation remained committed to the project during the seven month suspension in activities. Without their generosity and vision, Children in Crisis could not have been able to re-launch the project in February 2015.”

Tom Tyler, fundraising department Children in Crisis

VOCATIONAL TRAINING FOR RURAL COMMUNITIES IN RIVER CESS

Children in Crisis is a British NGO which carries out schooling projects in post-conflict areas, like D.R. Congo, Sierra Leone, and Liberia. Children in Crisis and its partner organisation FAWÉ is giving young adults literacy courses and a variety of vocational training, in vocations such as hairdressing, tailoring, and bakery. The course lasts four months, after which graduates receive two years' assistance in setting up their own businesses. The outbreak of ebola and disappointing project financing made Children in Crisis decide to downsize the project and to increase pupil assistance. Less training centres will be set up, but alongside their vocational training the pupils will also be assisted in setting up a financial support system at a community level. Following Cestos City (2013) and James Town (2014), three new training centres were established in River Cess in 2015.

Turing Foundation's donation € 150,000 (€ 50,000 in 2015)
Period covered by donation 2014 - 2016

EDUCATION PROJECTS

LIBERIA EDUCATION FOR VULNERABLE GIRLS IN PAYNESVILLE, MONROVIA EN KAKATA

Liberia is one of Save the Children's focus countries. For this project, Save the Children and local NGO THINK provide underprivileged girls with an accelerated two-year school programme, after which they will be able to enrol in formal (vocational) education. To this end, special 'drop-in centres' are being opened and teachers are being trained. The project keeps a tab on these girls in their subsequent education, and offers support where necessary.

The project was temporarily halted because of the ebola epidemic. When the centres reopened in July 2015, 150 girls enrolled for the new programme.



Turing Foundation's donation € 100,000
Period covered by donation 2013 – 2015

MALI ACCELERATED EDUCATION PROGRAMME FOR CHILDREN IN MÉNAKA DISTRICT

Stichting Vluchteling (Refugee Foundation Netherlands) gives refugees emergency aid, supports repatriation and helps with rebuilding, including in the field of education. In the Ménaka district rebellion has largely deprived the children of education since 2012. The project's Accelerated Learning Programme is currently enabling 810 children to learn in a short time the curriculum they have missed and further to participate in regular schooling. For this reason, members of school management committees are being trained and supported to perform their role well, 27 learning centres have been provided by local communities, and teachers are being trained to teach the programme. The Turing Foundation is contributing towards teaching materials and training.



Turing Foundation's donation € 50,000
Period covered by donation 2015

MALI MATERIAL FOR A VOCATIONAL TRAINING CENTER FOR WOMEN IN BANDIAGARA

Tools to Work refurbishes good-quality goods in the Netherlands and transfers the necessary knowledge to local communities to maintain and repair these goods themselves. In doing so, they provide tools and machines for small companies and vocational training institutions in developing countries. For this project Tools to Work is providing a women's vocational school in Bandiagara with 120 bicycles and 30 sewing machines and associated tool sets. A total of 100 women a year learn how to make clothes. Another 14 women are being trained to maintain and repair the machinery and tools, which will enable them to earn a living. The Turing Foundation is making a contribution towards the refurbishment and shipment of the bicycles and sewing machines, as well as towards the local knowledge-transfer course. In October 2015 the materials arrived at the training center.



Turing Foundation's donation € 20,000
Period covered by donation 2014 - 2015



'The contribution from the Turing Foundation is helping to ensure that young boys and girls get the opportunity to realise their potential and in turn better contribute to the development and future of Niger... Through the provision of teacher training and on-the-job coaching, the Turing Foundation has helped improve teacher performance, and in turn pupil engagement.'

Susan Finucane, Niger & Chad desk officer Concern Worldwide

EDUCATION PROGRAMME IN TAHOUA DISTRICT

Concern Worldwide is a humanitarian organisation with international offices in Ireland, the United Kingdom and the United States, and local teams in the 25 countries where it operates. Concern has been working in Niger since 2003, and is shifting its focus from building classrooms and facilities to improving education. They develop teaching materials and train teachers – using, amongst other things, video material - in order to improve their teaching abilities. In 2015 a training tool and a teaching manual were developed for bilingual education: in French and the local language, Hausa. Concern has involved the community and the government by setting up school management committees and by giving education inspectors guidance when carrying out their work. In consultation with schools, teachers and parents, it is also formulating a code of conduct to achieve a more safe and egalitarian school environment.

Turing Foundation's donation € 150,000 (€ 50,000 in 2015)
Period covered by donation 2015 - 2017

EDUCATION PROJECTS

NIGER SPEED SCHOOLS FOR ADOLESCENTS IN DOSSO EN TILLABÉRI

The Strømme Foundation is a Norwegian based development organisation focused on microfinance and education. It operates in thirteen countries across the world, including Niger. Following the success of the type 1 speed schools for young children, the Strømme Foundation has developed type 2 speed schools. These speeds schools are aimed at older children, between the ages of 13 and 14, who have not had any primary education. Six years of primary education are taught in two years of intensive schooling in small classes. This enables older children to move on to secondary education.

The Strømme Foundation and its local partner organisations have set up ten type 2 schools in Dosso and Tillabéri. In 2015 teachers were trained, the schools received teaching materials, and 242 children were enrolled. Unfortunately, the results have been disappointing up to now: just 57% of the pupils managed to pass their exams. As a result, the project's budget has been reduced.



Turing Foundation's donation € 115,000 (€ 55,000 in 2015)
Period covered by donation 2014 – 2016

SIERRA LEONE ENHANCING THE QUALITY OF EDUCATION IN KONO DISTRICT

Action Aid is an international development organisation which aims to improve access to and quality of education. In Sierra Leone Action Aid is organising a training course for teachers to give them better teaching techniques aided by better teaching materials. This improves the quality of education for 850 children at three primary schools. Action Aid is also organising special training courses for school management to strengthen their position in relation to the education authorities.

Girls are often disadvantaged and unsafe in and around school. This problem is being addressed on radio shows, by organising workshops and by setting up girls' clubs. Fourteen untrained teachers have been selected and are currently enrolled in a three-year 'distant education programme', and three girls' clubs have been set up, with a total of 150 members.



Turing Foundation's donation € 95,000 (€ 50,000 in 2015)
Period covered by donation 2014 – 2016

SIERRA LEONE ACCESS TO QUALITY EDUCATION IN KAILAHUN DISTRICT

The number of children in Sierra Leone receiving an education is extremely low; girls in particular seldom go to school. Thanks to this education project set up by Plan Nederland, 1,500 children – half of whom are girls – are given access to quality education. The project involves the construction of a school in Kailahun, and training courses for 50 teachers, 75 government employees, and the school management. In addition, parent committees are being set up, and work is being done to promote local awareness of the importance of educating children in general and girls in particular. Kailahun was one of the first regions where ebola appeared. In spite of this, the construction of the school and teachers' houses was completed, and training activities were resumed in mid-2015. Awareness meetings and school youth clubs are being used to try to get children – especially girls – back to school.

Turing Foundation's donation € 145,000 (€ 45,000 in 2015)
Period covered by donation 2013 - 2015



SIERRA LEONE TEACHER TRAINING RURAL PRIMARY EDUCATION IN TAMBAKHA

Street Child is dedicated to bringing high-quality education to the most vulnerable children in Sierra Leone at 30 locations across the country. This project is in Tambakha, the most northerly province of Sierra Leone, which thankfully was not badly affected by the ebola outbreak. Because of which, it was possible to fully execute the planned project activities. Thanks to the training of 100 teachers and the construction of twenty basic educational facilities in 60 communities, 4,000 children in Tambakha have access to good schooling. All of this is being done in close cooperation with the local community. The teacher trainee course takes three years to complete, at the end of which the teachers will be awarded with a government qualification. Several community schools were renovated or rebuilt in 2015, and income-generating activities were initiated.

Turing Foundation's donation € 90,000 (€ 36,000 in 2015)
Period covered by donation 2014 - 2016



ART



The Turing Foundation wants more people in the Netherlands to enjoy art. Which is why the Turing Foundation supports top-quality projects which attract a large public in the fields of visual arts, classical music and poetry.

PROJECTS IN: *THE NETHERLANDS*



VISUAL ARTS: MUSEUM EXHIBITIONS

The Turing Foundation supports Dutch museums in realising visual arts exhibitions. Our focus is on exhibiting outstanding foreign loans in the Netherlands.

CLASSICAL MUSIC: LIVE PERFORMANCES / MUSIC FESTIVALS

The Turing Foundation wants as many people as possible to enjoy high-quality live performances of classical music in the Netherlands. For this reason, our musical policy focuses on festivals with a national character and a considerable number of performances.

POETRY: THE TURING POETRY COMPETITION AND EXTRAORDINARY DUTCH POETRY PUBLICATIONS

The Turing Foundation wants more people to come in contact with and enjoy Dutch-language poetry. To that end, we organise the annual Turing Poetry Competition, and contribute towards extraordinary poetry publications.



EXHIBITION 'DANGER & BEAUTY. TURNER AND THE TRADITION OF THE SUBLIME', MUSEUM DE FUNDATIE AND RIJKSMUSEUM TWENTHE

From 5 September 2015 to 4 January 2016, Museum de Fundatie and Rijksmuseum Twenthe organised a double exhibition on William Turner (1775 - 1851), the most important English Romantic painter. Turner is renowned for being a painter who was far ahead of his time, for his experimental painting techniques and his use of light and colour. More than forty of Turner's oil and water paintings came to the Netherlands, and were thematically combined with the old masters who inspired him (including Ludolf Bakhuizen, Aelbert Cuyp and Claude Lorrain) and with works by modern and contemporary artists who were inspired by him (including Vincent van Gogh, Gustave Courbet, Mark Rothko and Raquel Maullwurf). The exhibited works were divided according to the four elements, which Turner studied in an almost scientific way. 'Water' and 'fire' were displayed in Zwolle; and 'earth' and 'air' in Enschede. The double exhibition was extremely successful, drawing 127,635 visitors to Museum de Fundatie and 92,196 visitors to Rijksmuseum Twenthe.

Turing Foundation's donation € 100,000 (€ 80,000 in 2015)
Period covered by donation 2015-2016

EXHIBITION 'BARBARA HEPWORTH. SCULPTURE FOR A MODERN WORLD', KRÖLLER-MÜLLER MUSEUM

The Kröller-Müller Museum organised a Barbara Hepworth (1903-1975) retrospective, fifty years after the last exhibition of her work in the Netherlands. The arrangement gave an overview from the modest stone sculptures of Hepworth's early days as an artist to the ambitious later bronzes, which are part of some of the large sculpture collections in the world. The Kröller-Müller Museum's own Hepworth collection was supplemented with major foreign loans. The exhibition took place from 28 November 2015 to 17 April 2016, and drew a record of 113,275 visitors.

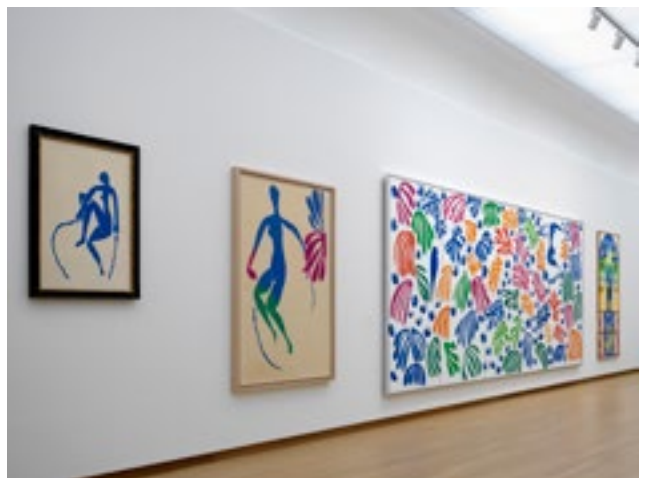
Turing Foundation's donation € 50,000
Period covered by donation 2015-2016



EXHIBITION 'THE OASIS OF MATISSE', STEDELIJK MUSEUM AMSTERDAM

Henri Matisse (1869-1954) was one of the most important and influential artists of the twentieth century, and he was one of the founders of modern art. In the final years of his life Matisse became skilled at making colourful collages from paper cut-outs (découpages). Between March and August 2015 the Stedelijk Museum organised an exhibition of these cut-outs, centred on the masterpiece 'La perruche et la sirène' from the museum's own collection. This exhibition was introduced by a chronological retrospective of Matisse's earlier work, embedded in the Stedelijk Museum's permanent collection of works by contemporaries. The exhibition drew more than 360,000 visitors, making it the Stedelijk Museum's most-visited exhibition since it reopened in 2012.

Turing Foundation's donation € 100,000
Period covered by donation 2014 - 2015



VISUAL ARTS PROJECTS



EXHIBITION 'MUNCH: VAN GOGH', [VAN GOGH MUSEUM](#)

The artists Vincent van Gogh (1853-1890) and Edvard Munch (1863-1944) are both renowned for their emotionally charged paintings and drawings, their personal and innovative styles, and their tormented lives. Both wanted to modernise art, and developed universal, expressive imagery to that end. The Van Gogh Museum, in close collaboration with the Munch Museum in Oslo, organised the exhibition 'Munch: Van Gogh', with the two artist's artistic kinship as the focal point.

The exhibition ran from 25 September 2015 to 17 January 2016, and drew 588,000 visitors, making it the most-visited exhibition in the Netherlands in 2015. No less than 28% of the visitors were from the Netherlands, which is double the normal proportion of Dutch visitors to the Van Gogh Museum.

Turing Foundation's donation	€ 100,000 (€ 50,000 in 2015)
Period covered by donation	2014-2016

TURING MUSEUM SQUARE BUS, VAN GOGH MUSEUM, RIJKSMUSEUM, STEDELIJK MUSEUM

Since 2012, the Turing Museum Square Bus has transported more than 65,000 school children from the Dutch provinces of North Holland, South Holland, Flevoland, and Utrecht to and from the museums on Museum Square – the Rijksmuseum, the Stedelijk Museum and the Van Gogh Museum – in order to acquaint them with the museum programmes on the Dutch Golden Age, Vincent Van Gogh and Dutch modernism. The Turing Foundation was the main benefactor of this successful project in the period 2012-2014, and decided to give an extra grant in 2015. This additional funding gave the museums enough time to ensure future funding. The project is now being continued by the three museums, using their own funds.

Turing Foundation's donation € 70,000
Period covered by donation 2015



IDFA

The International Documentary Film Festival Amsterdam (IDFA) is the world's most important documentary festival. From the over 3,500 international documentaries released each year, 300 are selected for the festival, giving an overview of the documentaries being made in the world. One of the most noteworthy thematic programmes in 2015 was 'The Good, The Bad and The Radical', dedicated to extreme developments in today's society. The 28th edition of the festival was once again a success: the number of visitors grew from 250,000 in 2014 to 270,000 in 2015.

Turing Foundation's donation € 45,000 (€ 15,000 in 2015)
Period covered by donation 2015-2017

18/29
nov
2015

idfa





ACQUISITION OF 'THE BREACH OF THE ST. ANTHONY'S DIKE' BY JAN ASSELIJN, [RIJKSMUSEUM AMSTERDAM](#)

In February and March 1651 the Netherlands was hit by terrible storms, which killed thousands of people. The Saint Peter's flood on 4-5 March breached various dykes, inundating a large part of Amsterdam and its environs. The breach of the Saint Anthony's Dike made a deep impression on many people, including artists. Painter Jan Asselijn was an eyewitness of the flood, and painted various versions of the disaster, of which 'The breach of the St. Anthony's Dike' is the most dramatic in this series. The painting – which was only recently discovered, after being part of a French family's collection for centuries – is a valuable addition to the Rijksmuseum's existing collection.

Turing Foundation's donation	€ 100,000
Period covered by donation	2015

ACQUISITION OF 'TALMUDIC ANATOMY' BY MEIJER DE HAAN, JEWISH HISTORICAL MUSEUM

The Jewish Historical Museum has supplemented its collection with the painting 'Talmudic Anatomy' (1880) by Meijer de Haan. The work, popularly known as 'Is the chicken kosher?', is a typical allegorical genre painting and one of Meijer de Haan's key works from his Jewish oeuvre. De Haan's life and career as an artist is exemplary of the emancipation of the Jewish community in the 19th century in the Netherlands.

This acquisition has been a long-held ambition of the museum, and it is an exceptional addition to the museum's collection.

Turing Foundation's donation	€ 10,000
Period covered by donation	2015



RESTORATION OF THE 'JARDIN D'ÉMAIL', KRÖLLER-MÜLLER MUSEUM

The artist Jean Dubuffet (1901-1985) designed a special object for the Kröller-Müller Museum's garden in 1974: 'Jardin d'email'. This artificial (glacial) garden is a grand 20 by 30 metres in size. It is a unique work of art, which invites visitors to walk through it and which children are free to play on. This work of art urgently needs to be restored after 40 years of wear and tear from its many visitors and exposure to the elements. The Turing Foundation is contributing towards the first phase of the restoration process: research into the construction process, its structural state and experience that has been garnered from restoring other works by Dubuffet.

Turing Foundation's donation	€ 75,000
Period covered by donation	2015



THE FOURTH TURING ART AWARD



The Turing Art Award is awarded every two years for Dutch museums' best exhibition plans. The Turing Art Award is intended to help museums achieve their ambitions by making a decisive contribution at an early phase to exceptional exhibitions of old, modern or contemporary visual art.

The Turing Art Award consisted of two prizes in 2015. Alongside the € 500,000 Turing Art Award I for large museums, there is now a second grant of € 150,000 for small and medium-sized museums – which receive up to around 200,000 visitors a year. In total 25 Dutch museums submitted 23 plans (there were two collaborations): 13 plans for the Turing Art Award I, and 10 plans for the Turing Art Award II.

For this edition the plans were once again evaluated by external advisors; the choice of the nominees and the eventual winners were made by the Turing Foundation's Board of Trustees. The evaluation of the plans included special foreign loans coming to the Netherlands - the main objective of our art policy - but explicitly also at how surprising and original the exhibition plans are.

The prizes were awarded on 21 May 2015, during a festive meeting at Museum Boijmans van Beuningen in Rotterdam, by Irene Asscher-Vonk, the chairperson of the Museumvereniging (Dutch Museum Association). Museum Boijmans van Beuningen won the Turing Art Award in 2013 for their exhibition 'Brancusi, Rosso and Man Ray: Framing Sculpture', which was on display from February to May 2014.

The exhibitions below were nominated for the Turing Art Award 2015:

TURING ART AWARD I (€ 500,000):

- **Fries Museum:** 'Alma-Tadema: Houses of Life, Art and Imagination' (2016-2017)
- **Rijksmuseum Amsterdam:** 'Hercules Segers' (2016-2017)
- **Van Abbe Museum:** 'Chagall, Lissitzky, Malevitch. A forgotten chapter of the Russian avant-garde' (2017-2018)

TURING ART AWARD II (€ 150,000):

- **Bonnefantenmuseum:** 'Myth unravelled: the mediaeval woodcarver the Master of Elsloo.' (2017)
- **Stedelijk Museum Alkmaar:** 'Flattering Brush. Caesar van Everdingen, 1616-1678' (2016)



TURING ART AWARD WINNERS



FRIES MUSEUM: ALMA-TADEMA: HOUSES OF LIFE, ART AND IMAGINATION

From the jury report: 'In the run-up to Leeuwarden's year as the European Capital of Culture, the Fries Museum is organising an exhibition on Lourens - Sir Lawrence - Alma-Tadema, the originally Frisian painter who created an unprecedented furore in Victorian Britain. The exhibition dovetails splendidly with the Fries Museum's policy, mission and collection, which owns a unique Alma-Tadema legacy itself. There will be special international loans, and a collaboration with and a purchase by the Viennese Belvédère and Leighton House in London; various specialists have been invited for the promising catalogue. We also praise the well thought-out marketing and education plan, the clear narrative of the design plan, and the extensive supplementary programming, for which extensive collaboration with other organisations is being done. It is an appealing exhibition, which will be attractive to a large public'.

The exhibition can be seen from 1 October 2016 to 7 February 2017.

The Turing Foundation receives high-quality applications for the Turing Art Awards. We have asked a number of museums to submit their exhibition plans as regular applications. The projects below have all been accepted:

Rijksmuseum Amsterdam: 'Hercules Segers' (2016-2017, € 80,000)

Hermitage Amsterdam: 'Dutch Masters from the Golden Age' (2017-2018. € 100,000)

Stedelijk Museum Amsterdam: 'Jean Tinguely. Machines – Spektakel – Destruction' (2016-2017, € 50,000)

National Museum of Ethnology: 'The Buddha' (2016, € 50,000)

National Museum of Antiquities: 'Nineveh' (2017, € 50,000)

Bonnefantenmuseum: 'Myth unravelled: the mediaeval woodcarver the Master of Elsloo' (2017, € 60,000)

‘Winning the prize has been crucially important. The Turing Foundation’s generous contribution has made it possible to bring loans from around the world to Leeuwarden, which has increased the project’s impact, and will draw a large public to Friesland. This prize’s prestige made it simpler to engage international partners in the project. As important was the positive effect on our organisation: it was a recognition and an incentive that the new Fries Museum has a place as a regional museum in the national and international museum world.’

Liesbeth van Keimpema, fundraising & sponsorships, Fries Museum

STEDELIJK MUSEUM ALKMAAR: ‘FLATTERING BRUSH. CAESAR VAN EVERDINGEN (1616-1678)

From the jury report: ‘A grand and ambitiously designed plan about the artist Caesar van Everdingen, on the occasion of the 400th anniversary of the birth of this little-known, but very intriguing, exceptional and outstanding seventeenth century painter. The exhibition is in the town where he was born and lived: Alkmaar. As well as the eleven of his paintings in the museum’s collection, an impressive list of 30 loans will be coming. The exhibition will give a worthy overview of Van Everdingen’s oeuvre and his specific qualities. The Stedelijk Museum Alkmaar deserves praise for an impressive catalogue, the restoration of two civic guard portraits – the progress of which can be followed on the website – and extremely extensive peripheral programming.’

The exhibition can be seen from 24 September 2016 to 22 January 2017.





THE TURING POETRY COMPETITION – SEVENTH EDITION

Which entry will be declared the best poem of the year? That is what is at stake in the Turing Poetry Competition, which is organised every year in cooperation with the Poëzieclub and Poëziecentrum Gent. It started in 2009 and every edition gets thousands of Flemish and Dutch poets writing. The winner receives € 10,000, and the best 100 poems are published in a special anthology by Van Gennep Publishing House. A selection of the top 100 are recited daily on the radio in the show 'Met het Oog op Morgen'. Apart from the prize money, the contest offers both amateur and more established poets the opportunity to reach a new public, receive media attention, perform, and receive interest from publishers. The Turing Poetry Competition award ceremony takes place on the last night of the annual Poetry Week.

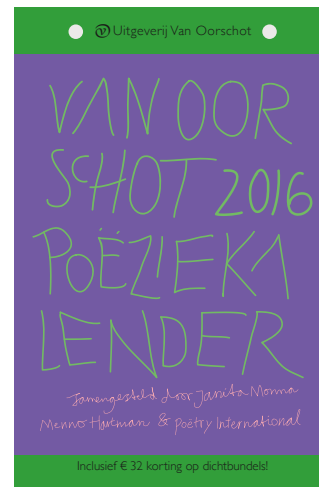
The seventh edition had 3,225 participants, who submitted a total of 10,243 poems. At the award ceremony on 3 February 2016 in the Stadsschouwburg Amsterdam, twenty-year-old Else Kemps from Malden was awarded the first prize of € 10,000 for her poem 'En of het zo door kan gaan'. A few days earlier the third-year student Creative Writing at the ArtEZ Art College had been in the finals of the NK Poetry Slam. The young winner received much media attention, and has had a weekly poetry column in Giel Beelen's radio programme since February. The second prize (€ 5,000) was awarded to the Flemish poet Geert Viaene. The third prize (€ 2,000) went to Joyce Willemsse from Veenendaal in the Netherlands.

Turing Foundation's	€ 120,000 (€ 40,000 in 2015)
Period covered by donation	2014-2016

POETRY CALENDAR 2015-2016

Since 2013 Van Oorschot Publishing House has been publishing the Poetry Calendar, which contains highlights from Dutch and world poetry. This page-a-day calendar, published in cooperation with Poetry International, features literary events like the annual Dutch Poetry Week, the VSB Poetry Prize, and the Turing Poetry Competition. The Turing Foundation is making a contribution to lower the retail price of the calendar in order to increase its circulation. This enables Van Oorschot to continue developing the 'institution' the Poetry Calendar has become, as it has been a tradition since 1985.

Turing Foundation's donation € 6,000
Period covered by donation 2015-2016



GO AHEAD, WRITE POETRY

Doe Maar Dicht Maar (Go Ahead, Write Poetry), organised by Poëziepaleis (Poetry Palace), has been the largest poetry contest for secondary school students (aged 12-19) in the Netherlands for many years. The contest is promoted by all Dutch secondary schools and is supported by an educational programme. Every year a Top 100 and a Top 10 (including five junior winners and five senior winners) are selected from approximately 2,000 entries. The Top 100 is published in a professionally designed anthology. The Turing Foundation finances the publication of the annual anthology, and contributes towards the prize money.

Turing Foundation's donation € 45,000 (€ 15,000 in 2015)
Period covered by donation 2013 - 2015





EARLY MUSIC FESTIVAL

The Organisatie Oude Muziek ('Early Music Organisation') plays an important role in presenting and stimulating new developments in early music. Its flagship production is the Festival Oude Muziek ('Early Music Festival') in Utrecht, which is the biggest early music festival in the world with more than 225 concerts over 10 days, and attracts around 60,000 visitors every year. The Festival Oude Muziek 2015 was held in the TivoliVredenburg and its theme was 'England, My England'. Music by English composers from the Renaissance and early Baroque had a central role in the festival. The Turing Foundation's contribution was earmarked for the opening concert by Jordi Savall and Hespérion XXI on 28 August 2015. The festival drew an impressive total of 64,850 visitors, breaking the existing record for the sixth year in a row.

Turing Foundation's donation € 30,000
Period covered by donation 2015



HOLLAND FESTIVAL

Every year the Holland Festival succeeds in presenting a world-class, innovative and much talked about festival, with a colourful mix of performing arts, big names and daring experiments. The Turing Foundation's contribution in 2015 was earmarked for the opera 'As Big As The Sky', which was commissioned by the Holland Festival. It was a collaboration between the Dutch composer Arnoud Noordegraaf and the visual artist Ai Weiwei. It reflects on the relationship between China and the West, and the rise of China in the world. The first festival under the new artistic director Ruth Mackenzie drew a total of 69,000 visitors.

Turing Foundation's donation € 50,000
Period covered by donation 2015

MUSIC PROJECTS

PIETER ROELF YOUTH CONCERT

The North Netherlands Symphony Orchestra (NNO) was founded in 1862 in the city of Groningen, making it the oldest professional symphony orchestra in the Netherlands. Every year since 1999 the NNO has organised the Pieter Roelf Youth Concerts: high-quality live classical music concerts for school children between the ages of 9 and 12.

The performance 'Nimrod's crazy fascinating discovery' was performed a total of 29 times in various concert halls in the three northern Dutch provinces of Friesland, Groningen and Drenthe, and was seen by 9,785 children.

Turing Foundation's donation € 10,000
Period covered by donation 2015



INTERNATIONAL CHAMBER MUSIC FESTIVAL UTRECHT

The top violinist Janine Jansen has been the leading light and standard bearer of the International Chamber Music Festival Utrecht (IKFU) since 2003. This annual five-day chamber music festival has a total of nearly 50 concerts and activities, held at over twenty different venues across the city of Utrecht, which enables it to reach a wide audience.

Since 2013 the festival has been held in June (it used to be at the end of December), which has caused a dip in the number of visitors. The organisation aims to boost public support in the coming years and to increase the number of visitors to the old level of 10,000 people. The aim for 2015 was achieved: the festival drew 8,500 visitors, which was a 20% increase.

Turing Foundation's donation € 20,000
Period covered by donation 2015



FESTIVAL CLASSIQUE

Festival Classique is an annual music festival on the Hofvijver pond in The Hague that successfully reaches a wide audience by presenting classical music in an accessible way and by having a large number of free concerts (about 50%). Festival Classique's annual highlight is the Hofvijver concert, which is broadcast live on Dutch television by AVRO. The festival drew a grand total of 37,000 visitors (of which, 7,400 paid) in 2015, which exceeded the goal of 35,000 visitors. The Turing Foundation's contribution was earmarked for an increase in the number of seats on the Hofvijver stage, enabling 5,000 people to watch the concert.

Turing Foundation's donation € 15,000
Period covered by donation 2015



WOLFGANG'S WONDERFUL TRIP AROUND THE WORLD SCHOOL CONCERTS

SEOP (the Educational Orchestra Project Foundation) and RBO Symfonia produce children's concerts about classical composers, and programme them in small municipalities in the province of South Holland where school concerts with a symphony orchestra seldom or never take place. The performance entitled 'Wolfgang's wonderful trip around the world' is a musical journey through the young Mozart's life. It was performed in 2013 for about 5,000 school children from Delft and environs. The continuation of this project – concerts in five new municipalities – was delayed last year. The nine concerts finally took place in September and October 2015 in the municipalities of Katwijk, Hoekse Waard, Brielle and The Hague, for 3,930 pupils from a total of 50 schools.

Turing Foundation's donation € 12,500
Period covered by donation 2014-2015





LEPRA

Leprosy is a chronic disease which almost exclusively affects the poorest of the poor. Its victims often lose hands or feet, or suffer a loss of sight. Leprosy has a long incubation period (five to seven years), and it is important to treat it before it causes irreversible nerve damage. It is for this reason that the Turing Foundation contributes to scientific research in the field of early diagnostics and treatment of leprosy. The research projects are carried out via our permanent collaborator: Netherlands Leprosy Relief (NLR).

**PROJECTS IN: BANGLADESH – UNITED KINGDOM - PHILIPPINES - INDIA –
INDONESIA - THE NETHERLANDS – NEPAL**



NUMBERS

In the 1970s, ten to twelve million people were infected with the leprosy bacterium. In the early 21st century, the World Health Organisation (WHO) estimated that number to be 600,000. The latest numbers indicate that 2014 saw 231,899 new cases of leprosy.

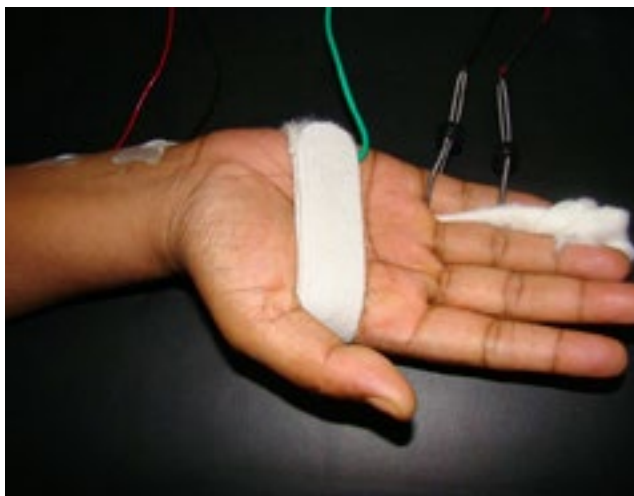
LEPROSY PROJECTS

'Leprosy is one of the oldest known diseases, but we still do not know enough to definitively get the disease under control. The Turing Foundation has been making substantial financial contributions towards scientific leprosy research for many years. The Turing Foundation is a valuable and involved partner, which understands the perseverance needed to make real scientific breakthroughs.'

Jan van Berkel, director of Netherlands Leprosy Relief and the Leprosy Research Initiative



TENLEP research team



RESEARCH ‘TREATMENT OF EARLY NEUROPATHY IN LEPROSY’ (TENLEP)

The TENLEP Research Consortium (Treatment of Early Neuropathy in Leprosy) is conducting a large-scale international research project into treating leprosy-related inflammation of the nerves.

The central questions are:

1. To what extent can treatment of subclinical nerve damage reduce the number of patients with permanent nerve function impairments?
2. What is the most effective treatment for patients who have clinical nerve function impairments?

A random double blind, placebo controlled research method was designed to find answers to these questions, including two integrated clinical trials. In the first trial, a corticosteroid treatment of subclinical nerve damage was compared over a twenty-week period with a placebo. Provisional results indicate that treating minor subclinical nerve damage with steroids yields no benefits. The second trial investigated the optimum duration of a 32-week treatment of clinical nerve damage and compared it with a twenty-week treatment. Provisional results indicate that there is no difference in the treatment results and that the twenty-week treatment is just as good.

The research was conducted in the Netherlands, the United Kingdom, and big countries where leprosy is endemic (Indonesia, India, Nepal and Bangladesh). The project was originally supposed to last four years (2010-2014), but was extended to six years (2010-2016). At the end of 2015 the international TENLEP steering committee discussed the first provisional results and decided that more time was needed for a solid data analysis and key publications. For this reason, the project was extended by three months; the final analysis will be presented in the first half of 2016.

Turing Foundation’s donation **€ 660,505 (€ 55,202 in 2015)**
Period covered by donation **2010 – 2016**

LEPROSY PROJECTS



INDIGO: EARLY DIAGNOSIS OF LEPROSY

The aim of the research is to diagnose (preclinical) leprosy using biomarkers (risk factors for developing leprosy that can be measured in the blood) and is the continuation of the IDEAL biobanking project (2012-2014), which was also supported by the Turing Foundation. Since 2013 blood samples from leprosy patients and their domestic contacts in Bangladesh have been collected in a 'biobank'. Some of these contacts are given a BCG vaccination, the commonly-used vaccine against tuberculosis, which offers partial protection against leprosy. BCG's protective effect is being used in this research to determine which biomarkers in the test group's blood indicate whether someone is protected against leprosy. This information will then be used to indicate which of the people infected with the leprosy bacterium are not protected from leprosy and therefore need treatment before they display symptoms of leprosy. Early diagnosis, followed by (preventive) treatment of people who risk developing leprosy will prevent the transmission of leprosy, which will reduce the number of people suffering from lifelong invalidity. The intake of patients and contacts for the BCG trial continued in 2015, and the analysis of blood samples was started. The intake is expected to be completed in 2016; the follow-up and the data analysis will take at least two more years.

Turing Foundation's donation	€ 747,543 (€ 186,645 in 2015)
Period covered by donation	2015-2018

RESEARCH 'INTO MACRO- AND MICRO-EPIDEMIOLOGY OF LEPROSY'

The Leonard Wood Memorial Research Centre (LWM) researches the transmission patterns of leprosy on the island of Cebu on the Philippines. The aim of the research is to increase insight and knowledge in order to improve leprosy eradication programmes on a local and global level. The research is based on a DNA database of 5,040 leprosy cases in Cebu, originating from the period 1999-2016. The study shows a small decline in leprosy patients in Cebu, except in children under fifteen. The average age and number of new patients remained stable in this group. More patients with a serious form of leprosy were also found, which indicates that there is still a large infection reservoir. The researchers believe that as well as tracing new cases of leprosy, the spread of leprosy must also be slowed. This can be achieved by, for example, approaching the families of newly-infected leprosy patients.

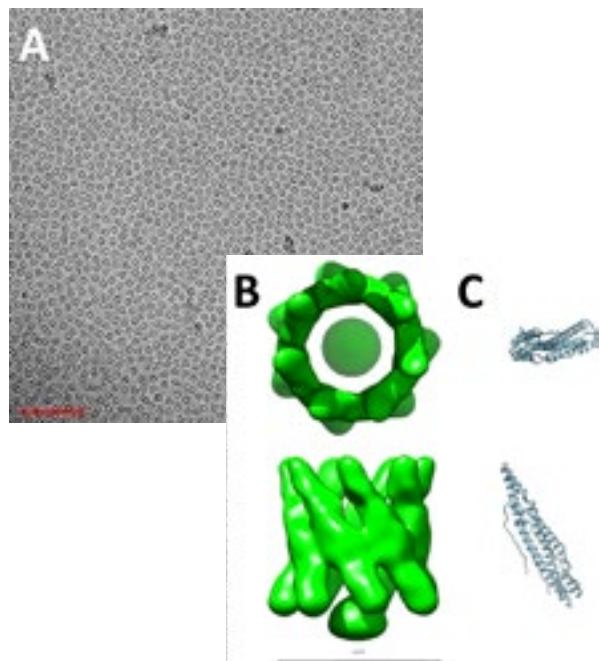
Turing Foundation's donation € 132,083 (€ 44,024 in 2015)
Period covered by donation 2014-2016



RESEARCH 'HOW MYCOBACTERIA LYSE THE PHAGOSOMAL MEMBRANE'

The BCG vaccine is mainly used to prevent tuberculosis, but is also beneficial in the prevention of leprosy. Research by the Netherlands Cancer Institute's (NKI) Tumor Biology Department has demonstrated that the main difference between pathogenic and non-pathogenic bacteria has to do with the location of the bacterium in the host cell. Researchers at Maastricht University are able to use state-of-the-art biological and technological resources for this follow-up study. This enables them to examine at a molecular level how the mycobacteria like *M. leprae* are able to survive and spread. The research is focused on gaining knowledge about factors that play a role in this, with the aim of improving the BCG vaccine, and thus intensifying the fight against tuberculosis and leprosy.

Turing Foundation's donation € 241,314 (€ 55,975 in 2015)
Period covered by donation 2010-2015



LEPROSY PROJECTS

RESEARCH 'IMMUNOPATHOLOGY OF LEPROSY', SECOND PHASE

A team at Leiden University Medical Centre (LUMC) conducts research on the complex processes which cause permanent nerve damage and lifelong handicaps as a result of leprosy. The research group has found a number of new host proteins which play an important role in resistance to mycobacteria. The possibility of modulating the activity of these proteins means that therapies could be developed to promote the killing of mycobacteria. This is called host-directed therapy, and can be used in conjunction with current antibiotics, as results have shown the therapy to have a complementary effect. This research has led to a better understanding of the cause and development of leprosy and of leprosy reactions which cause nerve damage. The ambition is to develop future strategies which can predict leprosy (and nerve damage), as well as early detection and treatment.



Turing Foundation's donation € 138,750 (€ 18,750 in 2015)
Period covered by donation 2010-2015

RESEARCH 'TRANSLATION OF MYCOBACTERIUM LEPRAE MOLECULAR VIABILITY ASSAYS (MVA)'

Dr L. Adams's research team, which is part of the National Hansen's Disease Programs, developed a molecular viability test which can quickly and accurately determine the viability of the leprosy bacterium. This is a breakthrough in the ability to monitor the effectivity of treatment and possible relapse. Various animal models are being used to define the test's technical limitations. The eventual aim of the research, which started in July 2015, is making the test usable for clinics.



Turing Foundation's donation € 159,000 (€ 53,000 in 2015)
Period covered by donation 2015-2018



RESEARCH 'INTEGRATION OF RAPID DIAGNOSTIC TESTS'

The Infectious Disease Research Institute (IDRI) is doing research into two new leprosy tests in Cebu City in the Philippines. The aim of the project is to detect leprosy at an early stage so that the development of the disease can be monitored better. The project started in May 2015 with the recruitment of patients and their contacts. A blood sample was taken from these participants using a finger prick. They all responded positively to this treatment, which can be easily integrated into the standard leprosy surveillance programme.

Turing Foundation's donation € 139,013 (€ 33,612 in 2015)
Period covered by donation 2015-2017



CONTRIBUTION TO NETHERLANDS LEPROSY RELIEF'S RESEARCH DEPARTMENT

For years the Turing Foundation and Netherlands Leprosy Relief have been co-financing research projects. Since September 2013, Netherlands Leprosy Relief has been part of the Leprosy Research Initiative; this is an international partnership for funding research into leprosy.

The Turing Foundation contributed in 2015 more than € 463,751 towards a total of seven studies into an early diagnosis and treatment of leprosy. In addition, the Turing Foundation donates 5% of the total sum of donations made to Netherlands Leprosy Relief each year, as a contribution towards the overhead costs the Leprosy Research Initiative makes for these studies.

Turing Foundation's donation € 23,118
Period covered by donation 2015



FINANCIAL REPORT

CAPITAL OF THE TURING FOUNDATION

The founders of the Turing Foundation donated € 60 million in total to the foundation in the period 2006 to 2009. Every year € 3.6 million of the foundation's assets are made available for achieving its objectives. The annual budget is an approximation; the real amount depends on the number of applications approved, the actual realisation of projects, and the planning and runtime of projects.

FINANCIAL DEVELOPMENTS IN 2015

Since its foundation in 2006, the Turing Foundation has made a total of € 31.2 million of donations or reservations for multi-year projects. A little more than € 2.6 million was donated to projects in 2015, and over € 4.1 million is currently allocated to identified grants in the coming few years (appropriated reserves).

Donations	2006 to 2014	2015	Appropriated	Total
Education	€ 7,681,529	€ 541,358	€ 914,600	€ 9,137,487
Art	€ 7,088,223	€ 1,092,582	€ 809,000	€ 8,989,805
Nature	€ 6,426,906	€ 564,500	€ 1,098,000	€ 8,089,406
Leprosy	€ 2,871,669	€ 483,527	€ 1,317,370	€ 4,672,566
Other	€ 327,500	-	-	€ 327,500
Total	€ 24,395,827	€ 2,681,967	€ 4,138,970	€ 31,216,764

ASSET MANAGEMENT

The objective of the Turing Foundation's asset management is to make optimal use of the capital, so as many charitable projects as possible can be supported over the years. It is not a goal in itself to maintain the original capital.

The Turing Foundation follows a moderately conservative investment policy, investing between 60% and 80% of its assets in fixed-interest securities and cash. Investments in equities (20% to 40%) are generally made in worldwide index funds. We do not invest in individual shares. A maximum of 5% of the capital is invested in long-term, higher-risk investments such as private equity investments, real estate or hedge funds. In 2015, the total result from income and capital gains of the Turing Foundation added up to € 580,003. This is a positive (annualised) return of 1.62% from the investment portfolio.

The largest part of the Turing Foundation's assets is managed by Goldman Sachs International (which managed two-thirds of our capital at the end of 2015). The remainder is mainly invested through Rabobank. Apart from being advised by the banks that manage our assets, we ask independent experts for advice as well. In 2015 we asked a third party to review our asset management. This led to a number of recommendations, which have been used to adjust our investment policy, in which governance and risk acceptance in particular were set forth in greater detail. In 2016 we will discuss the consequences of our adjusted investment policy on existing portfolios with our asset managers Goldman Sachs and Rabobank.

AUDIT

KPMG has done the external auditing of our annual accounts since the Turing Foundation was founded. The mandatory change of the attending accountant was occasion for us to invite other firms to make an offer to do the Turing Foundation's external auditing. Starting from the 2015 financial year, Mazars Accountants is appointed as our external auditor.

Mazars Accountants issued an unqualified opinion on the Dutch report in June 2016 for the full Financial Statements. The full Financial Statements 2015 can be consulted on www.turingfoundation.org.

FINANCIAL STATEMENTS

Summary Balance sheet

Assets	End of 2015	End of 2014
Fixed assets		
1. Tangible Fixed Assets	€ 31,691	€ 57,420
Total fixed assets	€ 31,691	€ 57,420
Current Assets		
2. Securities	€ 34,899,325	€ 36,759,327
3. Debtors	€ 120,767	€ 984,735
4. Liquid Assets	€ 3,526,281	€ 3,235,265
Total current assets	€ 38,546,373	€ 40,979,327
Total	€ 38,578,064	€ 41,036,747
Liabilities	End of 2015	End of 2014
Equity Capital		
5. Appropriated Reserves	€ 4,138,970	€ 4,062,967
6. Other Funds Available (for discretionary spending)	€ 34,167,594	€ 36,524,404
Total Liabilities	€ 38,306,564	€ 40,587,371
Short-Term Liabilities		
7. Donations Committed but Unpaid	€ 216,500	€ 414,202
8. Accrued Liabilities	€ 55,000	€ 35,174
Total Short-Term Liabilities	€ 271,500	€ 449,376
Total Liabilities	€ 38,578,064	€ 41,036,747

Summary Statement of Income and Expenditure

Income	Budget 2015	Actual 2015	Actual 2014
9. Income from donations	€ 450,000	€ 220,461	€ 1,844,010
10. Financial Income	-	€ 580,003	€ 1,603,448
Total Income	€ 450,000	€ 800,464	€ 3,447,458

Expenditure	Budget 2015	Actual 2015	Actual 2014
11. Personnel Costs	€ -217,736	€ -215,439	€ -196,817
12. Depreciation of Fixed Assets	€ -26,735	€ -26,658	€ -26,471
13. Donations Provided	€ -3,600,000	€ -2.681.967	€ -2,022,425
14. Other Expenses	€ -174,690	€ -157,207	€ -152,582
Total Expenditure	€ -4,019,161	€ -3,081,271	€ -2,398,295

Income minus Expenditure	€ -3,569,161	€ -2,280,807	€ 1,049,163
---------------------------------	---------------------	---------------------	--------------------

EXPLANATORY NOTES:

The Financial Statements have been presented in accordance with the Annual Reporting Guidelines (*Richtlijnen voor de Jaarverslaggeving*). In particular, Guideline 640 for non-profit making organisations was applied.

The Foundation's Equity Capital can be subdivided into:

Appropriated Reserves: the appropriated reserves include donations to organisations which have been committed, but have not yet resulted in an irrevocable obligation to the receiving organisation.

Other Funds Available (for discretionary spending): that part of the equity capital which the competent bodies can dispose of without any legal or statutory restraints within the objectives of the foundation.

The administrative overhead in 2015 amounted to € 223,746, which is 7.3% of the total expenditure.

BOARD OF TRUSTEES AND ORGANISATION

The Board of Trustees of the Turing Foundation is composed of the following members as of 31 December 2015:

Pieter Geelen (Chairman)

Alexander Ribbink (Secretary)

Jeroen Davidson (Treasurer)

The Organisation of the Turing Foundation is composed of the following people (2,6 FTE) as of 31 December 2015:

Minke van Rees, director of Education and Nature (0.75 FTE).

Ellen Wilbrink, director of Art and Leprosy Relief, and financial management (0.75 FTE).

Chantal Vrugink, Project Manager (0.5 FTE)

Florentine van Waesberghe-Six, Project Manager (0,6 FTE)

The Board of Trustees is responsible for adopting and monitoring policies; the management is responsible for its application and implementation. These working agreements have been recorded internally in the minutes of board meetings. The Board of Trustees met five times in 2015. The members of the Board of Trustees render their services unpaid and do not claim any expenses.

INDEX

Organisations that are directly or indirectly supported by the Turing Foundation in 2015:

Action Aid	32	Netherlands Cancer Institute	57
AgriDynamic	27	Netherlands Leprosy Relief	52, 54, 59
Aide et Action	27	newTree	16
Both ENDS	20	North Netherlands Symphony Orchestra	50
Children in Crisis	29	Early Music Festival	48
Concern Worldwide	31	Peace Parks Foundation	20
Conservation International	18	Plan Nederland	33
CREDO	25	Poëzieclub	46
CRESA	20	Poëziepaleis	47
Edukans	25	Refugee Foundation Netherlands	30
FAWE	29	Rijksmuseum Amsterdam	39, 40, 43, 44
Festival Classique	51	Rijksmuseum Twenthe	36
Fries Museum	43, 44	Save the Children	30
Greenpeace	17	SEOP	51
Holland Festival	49	Stedelijk Museum Alkmaar	43, 45
Hubi & Vinciane	24	Stedelijk Museum Amsterdam	37, 39, 44
IDFA	39	Street Child	33
IDRI	59	Strømme Foundation	32
INDIGO	56	TENLEP	55
International Chamber Music Festival Utrecht	50	THINK	30
Jewish Historical Museum	41	Tiipaalga	16
Knowledge for Children	28	Tools To Work	30
Kröller-Müller Museum	37, 41	Van Gogh Museum	38, 39
Le Pont Foundation	24	Van Oorschot Publishing House	47
Leonard Wood Memorial Research Center	57	War Child	26
Leprosy Research Initiative	54, 59	WWF - Netherlands	19, 21
LUMC	58	Wetlands International	19
Macheo Children's Centre	28	Woord en Daad	25
Museum de Fundatie	36	ZOA	27
National Hansen's Disease Programs	58	Zoological Society of London	18

COLOFON

Editing and text Turing Foundation

Publication Turing Foundation

Herengracht 514, 1017 CC Amsterdam, The Netherlands

Tel +31 (0)20 520 00 10

www.turingfoundation.org

Design Jean Haasbroek

Print Speed-O-Print

Paper Silk MC



Photo Concern/Niger (page 31), Edward O'Carroll

Photo Strømme Foundation (page 32), Egil Mongstad

Photo The Turing Poetry Competition (page 46), Jean Haasbroek

The other photographs in this annual report were made available to the staff of the Turing Foundation by project partners.

The Turing Foundation has ANBI (official Dutch charity) status

RSIN (Fiscal nummer): 81 61 09 229

Chamber of Commerce dossier number: 34252769

